

Poll

What was your first  
version of Revit?

April 2012



Melanie  
Perry

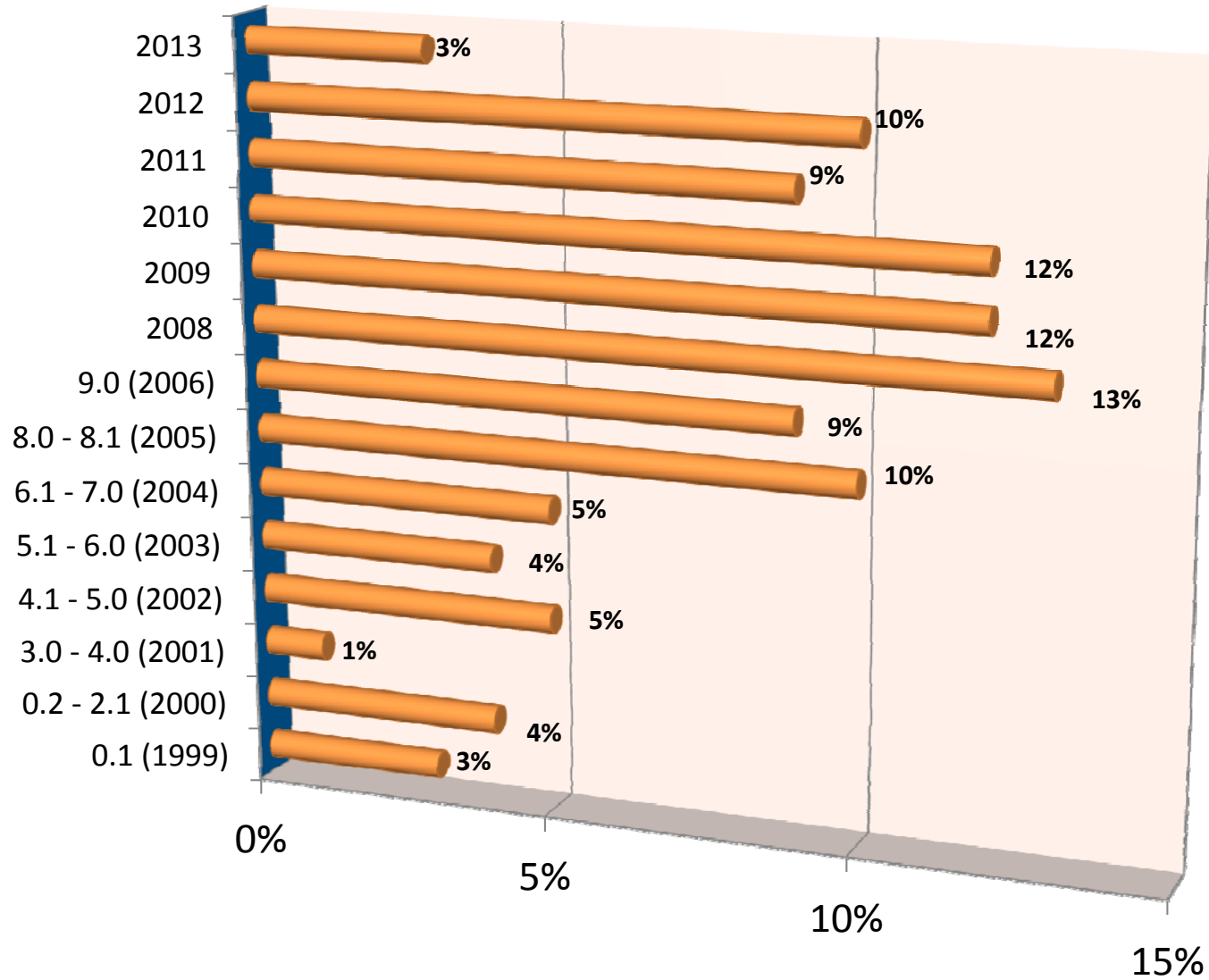


**AUGI**

Autodesk User Group  
International

**AUGI Surveys**

## What was your first version of Revit?



April 2012

First Revit Version Poll



**AUGI**

Autodesk User Group  
International

**AUGI Surveys**

April 2012

# First Revit Version Poll

## Homepage Poll – What was your first version of Revit?

Thank you to the 590 members who took part in this month's AUGI.com homepage poll!  
We asked our Reviteers what release they used first.

Roughly speaking, that means that any given Revit user you meet on our site has about six years of experience with this particular tool. Of course, over 41% of AUGI's Revit community has even more familiarity with it.

That is a whole lot of BIMming going on.

Bill Condon, IT Manager at HuntonBrady Architects, says that his Florida firm began making the switch to Revit back in 2005. He states that it was a necessary adoption in order to remain competitive in their market. There were adjustments that had to be made in his company's workflow, but leadership and the design team were dedicated to making the move and haven't looked back.

If you have any suggestions for future polls (or surveys), please let me know: [Melanie.Perry@augi.com](mailto:Melanie.Perry@augi.com)



**AUGI**

Autodesk User Group  
International

**AUGI Surveys**